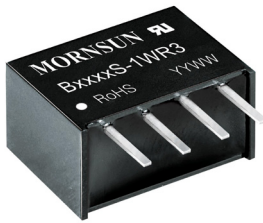


1W isolated DC-DC converter
Fixed input voltage, unregulated single output



Patent Protection



Continuous Short Circuit Protection



UL62368-1



EN62368-1



BS EN62368-1

RoHS

FEATURES

- Continuous short-circuit protection
- No-load input current as low as 5mA
- Operating ambient temperature range: -40°C to +105°C
- High efficiency up to 85%
- I/O Isolation test voltage: 1.5k VDC/min, 3k VDC/1s
- Industry standard pin-out
- Compact SIP package

B05_S-1WR3 series are specially designed for applications where an isolated voltage is required in a distributed power supply system. They are suitable for: pure digital circuits, low frequency analog circuits, relay-driven circuits and data switching circuits.

Selection Guide

Certification	Part No.	Input Voltage (VDC)	Output		Full Load Efficiency (%) Min./Typ.	Capacitive Load(μF) Max.
		Nominal (Range)	Voltage (VDC)	Current (mA) Max./Min.		
UL/EN/BS EN	B0503S-1WR3	5 (4.5-5.5)	3.3	303/30	70/74	2400
	B0505S-1WR3		5	200/20	78/82	2400
	B0509S-1WR3		9	111/12	79/83	1000
	B0512S-1WR3		12	84/9	79/83	560
	B0515S-1WR3		15	67/7	79/83	560
	B0524S-1WR3		24	42/4	81/85	220

Input Specifications

Item	Operating Conditions	Min.	Typ.	Max.	Unit
Input Current (full load / no-load)	3.3VDC output	--	271/5	286/10	mA
	5VDC output	--	244/5	257/10	
	9VDC/12VDC/15VDC output	--	241/12	254/20	
	24VDC output	--	241/18	254/30	
Reflected Ripple Current*		--	15	--	
Surge Voltage (1sec. max.)		-0.7	--	9	VDC
Input Filter		Capacitance Filter			
Hot Plug		Unavailable			

Note: * Refer to DC-DC Converter Application Notes for detailed description of reflected ripple current test method.

Output Specifications

Item	Operating Conditions	Min.	Typ.	Max.	Unit	
Voltage Accuracy		See output regulation curve (Fig. 1)				
Linear Regulation	Input voltage change: ±1%	3.3VDC output	--	--	1.5	--
		Other output	--	--	1.2	
Load Regulation	10%-100% load	3.3VDC output	--	15	20	%
		5VDC output	--	10	15	
		9VDC output	--	8	10	
		12VDC output	--	7	10	
		15VDC output	--	6	10	
		24VDC output	--	5	10	

Ripple & Noise*	20MHz bandwidth	Other output	--	30	75	mVp-p
		24VDC output	--	50	100	
Temperature Coefficient	100% load		--	±0.02	--	%/°C
Short-circuit Protection			Continuous, self-recovery			

Note:* The "parallel cable" method is used for Ripple and Noise test, please refer to DC-DC Converter Application Notes for specific information.

General Specifications

Item	Operating Conditions	Min.	Typ.	Max.	Unit
Isolation	Input-output electric strength test for 1 minute with a leakage current of 1mA max.	1500	--	--	VDC
	Input-output electric strength test for 1 second with a leakage current of 1mA max.	3000	--	--	
Insulation Resistance	Input-output resistance at 500VDC	1000	--	--	MΩ
Isolation Capacitance	Input-output capacitance at 100kHz/0.1V	--	20	--	pF
Operating Temperature	Derating when operating temperature ≥85°C, (see Fig. 2)	-40	--	105	°C
Storage Temperature		-55	--	125	
Case Temperature Rise	Ta=25°C	3.3VDC output	--	25	
		Other output	--	15	--
Pin Soldering Resistance Temperature	Soldering spot is 1.5mm away from case for 10 seconds	--	--	300	
Storage Humidity	Non-condensing	--	--	95	%RH
Switching Frequency	100% load, nominal input voltage	--	270	--	kHz
MTBF	MIL-HDBK-217F@25°C	3500	--	--	k hours

Mechanical Specifications

Case Material	Black plastic; flame-retardant and heat-resistant plastic (UL94 V-0)
Dimensions	11.60 x 6.00 x 10.16mm
Weight	1.3g(Typ.)
Cooling Method	Free air convection

Electromagnetic Compatibility (EMC)

Emissions	CE	CISPR32/EN55032	CLASS B (see Fig. 4 for recommended circuit)
	RE	CISPR32/EN55032	CLASS B (see Fig. 4 for recommended circuit)
Immunity	ESD	IEC/EN61000-4-2	Air ±8kV, Contact ±4kV perf. Criteria B

Typical Characteristic Curves

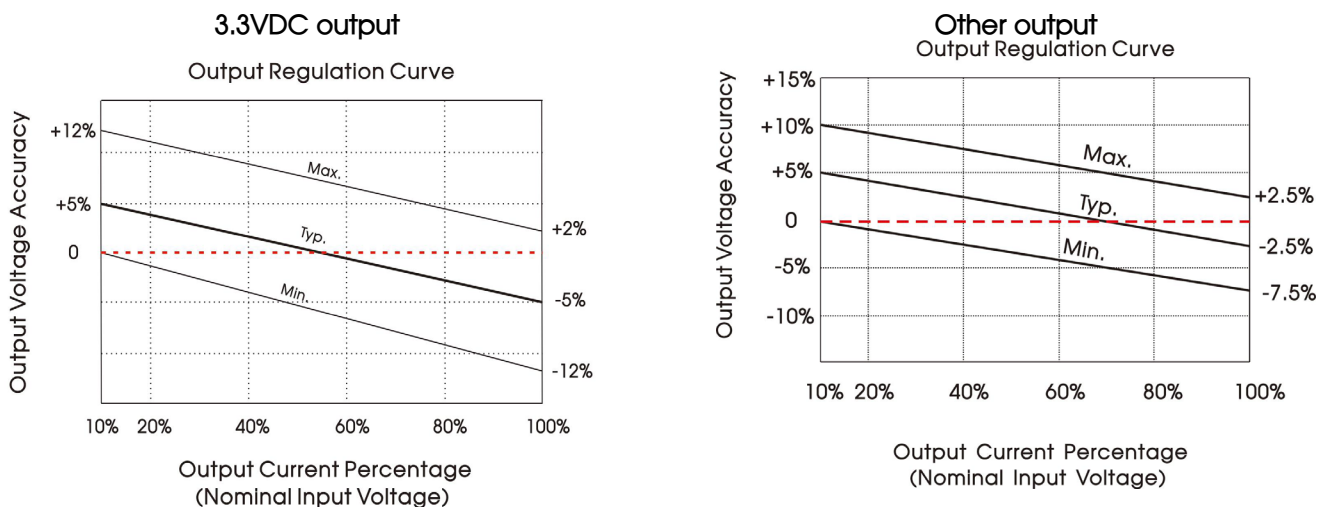


Fig. 1

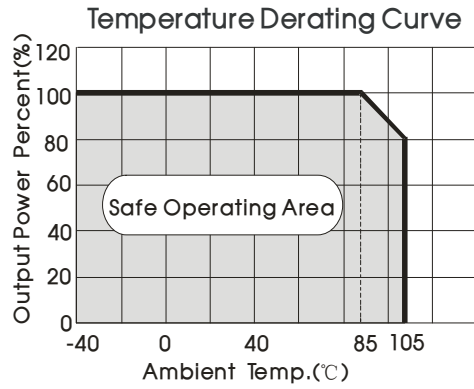
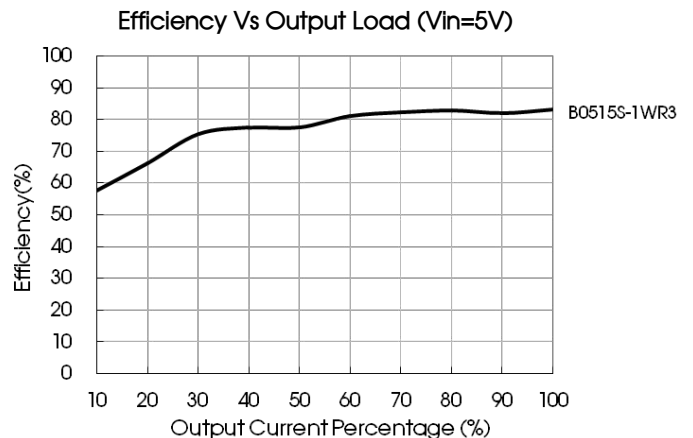
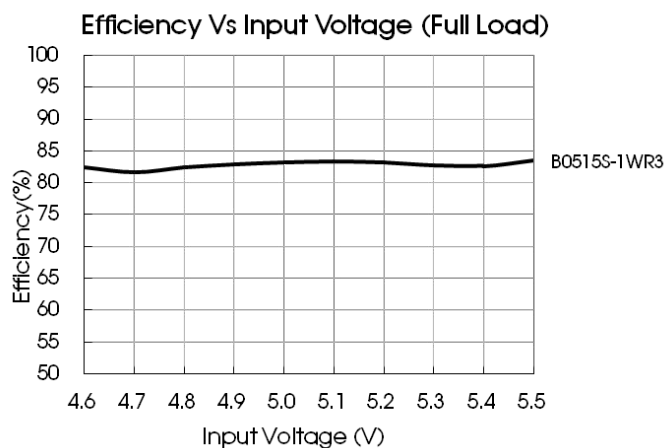
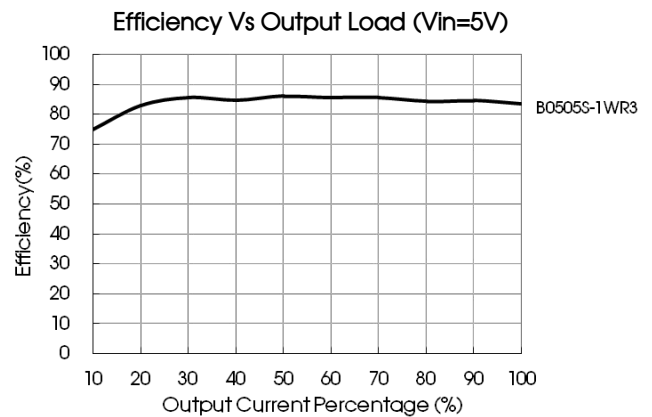
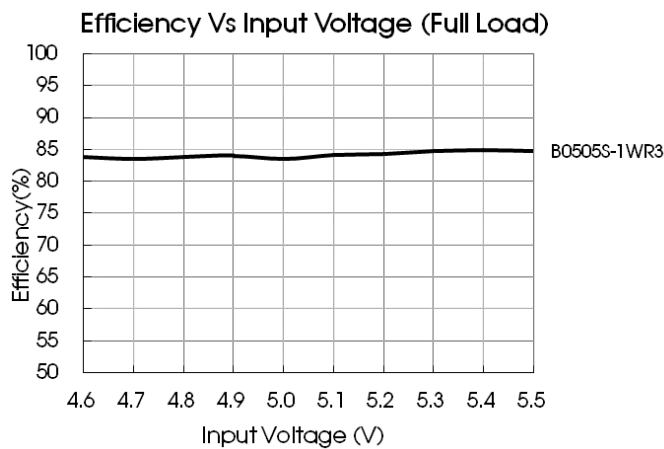


Fig. 2



Design Reference

1. Typical application

Input and/or output ripple can be further reduced, by connecting a filter capacitor from the input and/or output terminals to ground as shown in Fig. 3.

Choosing suitable filter capacitor values is very important for a smooth operation of the modules, particularly to avoid start-up problems caused by capacitor values that are too high. For recommended input and output capacitor values refer to Table 1.



Fig. 3

Recommended capacitive load value table (Table 1)

Vin	Cin	Vout	Cout
5VDC	4.7μF/16V	3.3/5VDC	10μF/16V
--	--	9/12VDC	2.2μF/25V
--	--	15/24VDC	1μF/50V

2. EMC (CLASS B) compliance circuit

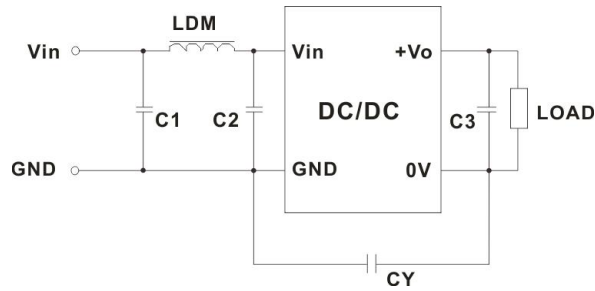


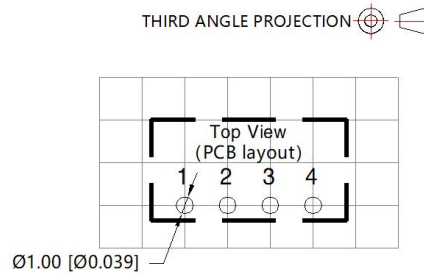
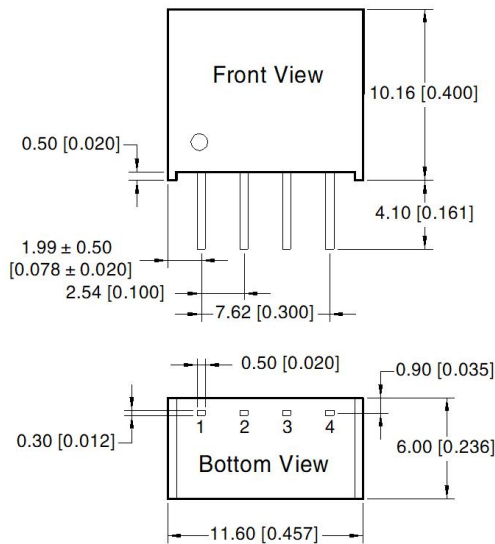
Fig. 4

EMC recommended circuit value table (Table 2)

Input voltage 5VDC	Output voltage	3.3/5/9VDC	12/15/24VDC
		Emissions	C1/C2
		CY	--
		C3	1nF /4kVDC VISHAY HGZ102MBP TDK CD45-E2GA102M-GKA
		LDM	6.8 μ H
		Refer to the Cout in table 1	

Note: In the case of actual use, the requirements for EMI are high, it is subject to CY.

Dimensions and Recommended Layout



Note: Grid 2.54*2.54mm

Pin	Mark
1	GND
2	Vin
3	0V
4	+Vo

Note:
Unit: mm[inch]
Pin section tolerances: ± 0.10 [± 0.004]
General tolerances: ± 0.25 [± 0.010]